

This handout is a shortened version of what will be presented at the conference



Raising Barns while Taking Down Silos:

Cooperative Collaboration is the Key

Bridget G Lowery, MS, CBIST
Main Line Rehabilitation Associates

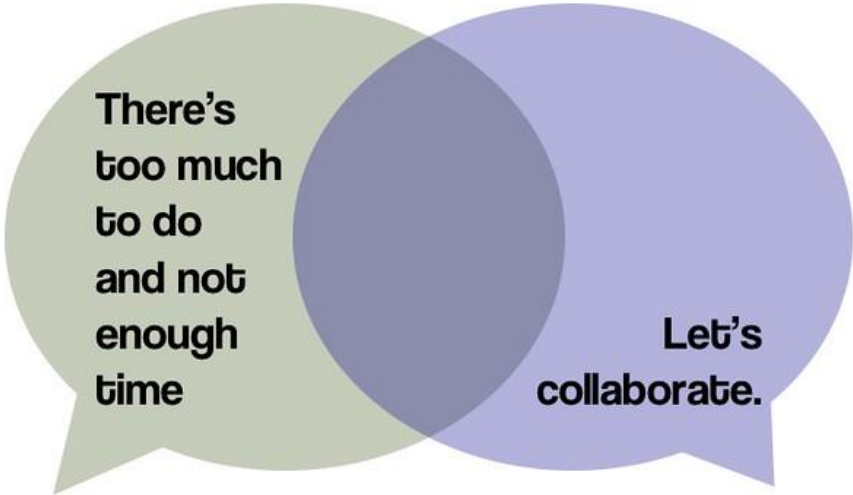
Stefanie Bauman, BA, CBIS
Success Rehabilitation, Inc

RCPA Conference
September 25, 2019



Amish Barn Raising:

Coming together versus
our tendency to set up silos



There's
too much
to do
and not
enough
time

Let's
collaborate.

let's collaborate

TEARING DOWN SILOS

I'M LOOKING FOR HELP ON THIS, VIRTUAL TEAM...



Function

IT'S NOT IN MY P & L.



Country

IT'S NOT IN MY OBJECTIVES.

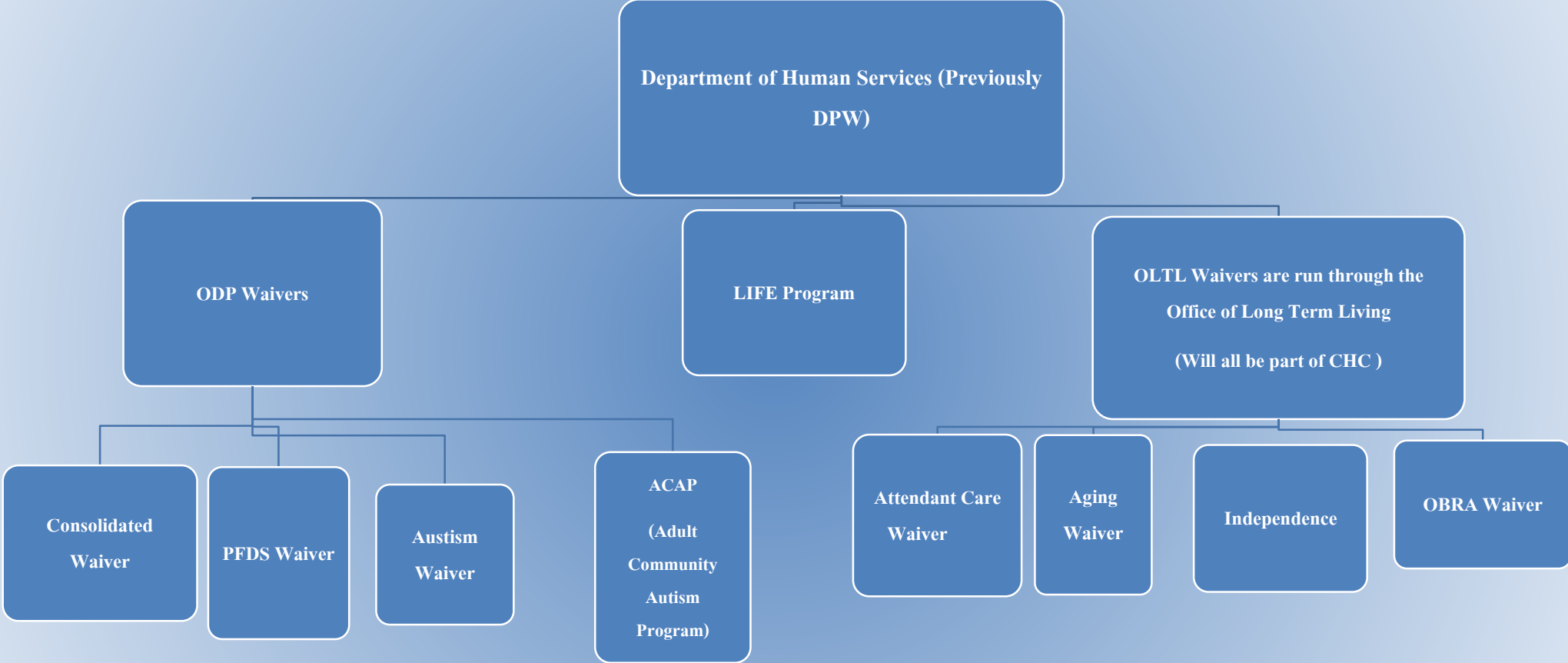


Product Group

I'D LIKE TO HELP, BUT...

Traditional silos getting in the way?

Overview of PA Medicaid Waivers



LONG-TERM SERVICES AND SUPPORTS BENEFIT GUIDE

THE FOLLOWING BENEFITS ARE AVAILABLE TO PARTICIPANTS WHO ARE **NURSING FACILITY CLINICALLY ELIGIBLE AND RECEIVE MEDICAID LONG-TERM SERVICES AND SUPPORTS THROUGH A HOME- AND COMMUNITY-BASED WAIVER OR RESIDE IN A NURSING FACILITY**. THESE ARE IN ADDITION TO THE PHYSICAL HEALTH BENEFITS IN THE ADULT BENEFIT PACKAGE.

- Adult daily living services
- Assistive technology
- Behavior therapy
- Benefits counseling
- Career assessment
- Cognitive rehabilitation therapy
- Community integration
- Community transition services
- Counseling
- Employment skills development
- Financial management services
- Home adaptations
- Home delivered meals
- Home health aide
- Home health – nursing
- Job coaching
- Job finding
- Non-medical transportation
- Nutritional counseling
- Participant-directed community supports
- Participant-directed goods and services
- Personal assistance services
- Personal emergency response system (PERS)
- Pest eradication
- Residential habilitation
- Respite
- Service coordination (including information and assistance in support of participant direction. Service coordination is furnished as a distinct activity to waiver participants as an administrative activity)

EXTENDED STATE PLAN SERVICES

- Structured day habilitation
- TeleCare
- Vehicle modifications
- Home health – physical, occupational, and speech and language therapies
- Specialized medical equipment and supplies

CHC managed care organizations may provide more services than those required by the CHC program.

ODP Waivers

Consolidated & PFDS Services

- ▶ Advanced Supported Employment
- ▶ Assistive Technology
- ▶ Behavioral Support
- ▶ Benefits Counseling
- ▶ Communication Specialist
- ▶ Community Participation Support
- ▶ Companion
- ▶ Consultative Nutritional Services
- ▶ Education Support
- ▶ Family/Caregiver Training and Support
- ▶ Home Accessibility Adaptations
- ▶ Homemaker/Chore
- ▶ Housing Transition and Tenancy Sustaining Services
- ▶ In-Home and Community Support
- ▶ (Licensed and Unlicensed) Life Sharing
- ▶ Music, Art and Equine Assisted Therapy
- ▶ (Licensed and Unlicensed) Residential Habilitation
- ▶ Respite
- ▶ Shift Nursing
- ▶ Small Group Employment
- ▶ Specialized Supplies
- ▶ Supported Employment
- ▶ Supported Living
- ▶ Supports Broker
- ▶ Supports Coordination
- ▶ Therapy
 - ▶ Physical
 - ▶ Speech/Language
 - ▶ Occupational
 - ▶ Orientation, Mobility and Vision
- ▶ Transportation
- ▶ Vehicle Accessibility Adaptations

OVR - Office of Vocational Rehabilitation

- ▶ **Diagnostic Services**

- ▶ **Vocational Evaluation**

- ▶ **Vocational Counseling**

- ▶ **Vocational Training**

- ▶ **Restoration Services**

- ▶ PT

- ▶ OT

- ▶ Wheelchair

- ▶ Automobile Hand controls

- ▶ **Assistive Technology**

- ▶ **Placement Assistance**

- ▶ Job-seeking programs

- ▶ Job development

- ▶ Job Coaching

- ▶ Benefits Counseling

- Support Services**

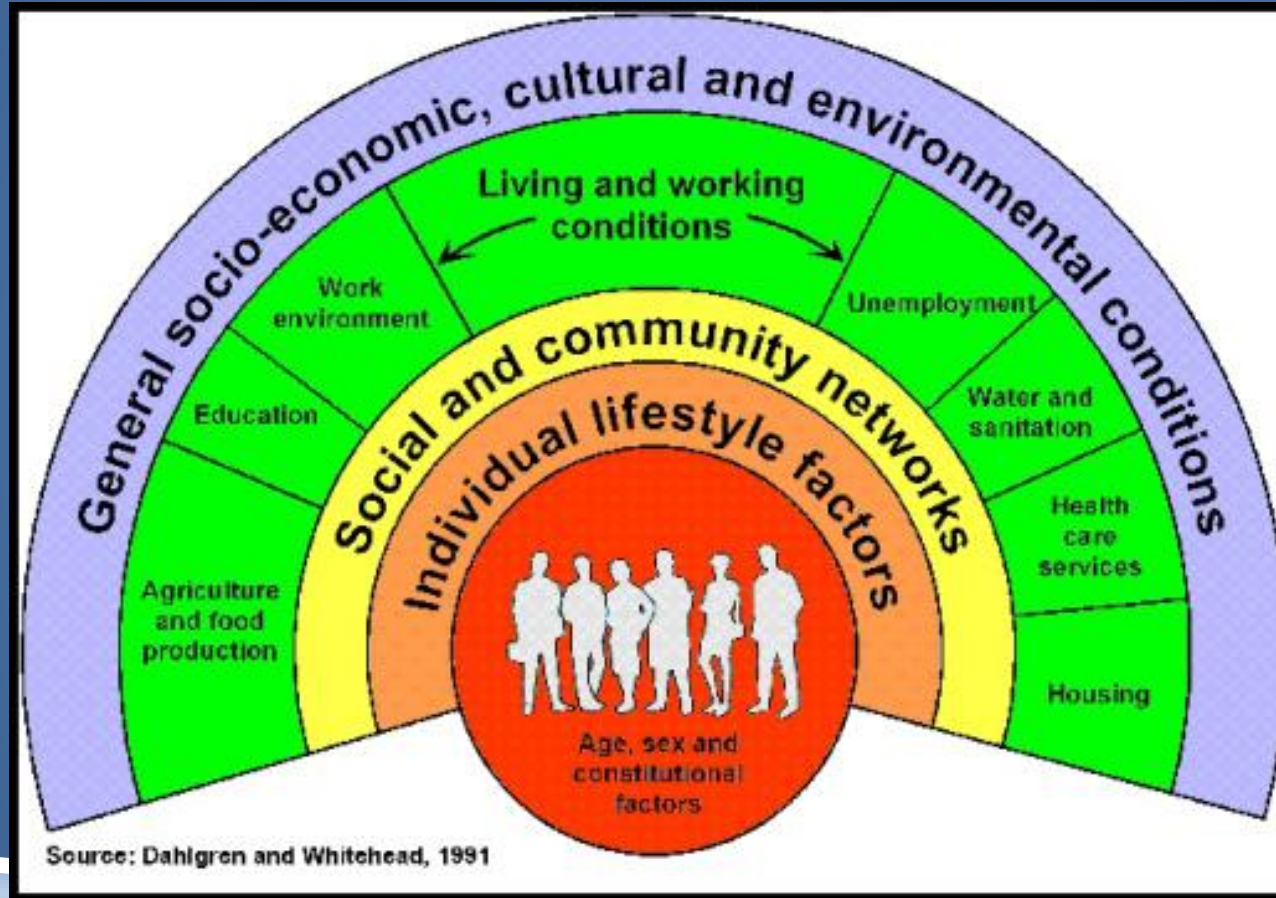
- ▶ Occupational tools, licenses, or equipment

- ▶ Home, van/car or workplace modifications

- ▶ Mobility Training

RAISING THE BARN

Social Determinants of Health



Defining Holistic Needs

- ▶ Physical
- ▶ Psychological
- ▶ Spiritual
- ▶ Behavioral
- ▶ Nutritional
- ▶ Community access

Addressing needs Holistically

- ▶ Psychiatry/Psychology
- ▶ Nutrition
- ▶ D&A counseling
- ▶ Durable medical equipment
- ▶ Site for spiritual connection
- ▶ Others?

Communication

Remember, **Communication is Really a Two-way Process** in which participants not only exchange information, but also create and share meaning.

"THE SECRET IS TO
GANG UP ON THE PROBLEM,
NOT EACH OTHER."

— THOMAS STALLKAMP

12 QUOTES TO INSPIRE COLLABORATION
IN THE WORKPLACE DISCUSSAREETING.COM

References

- Collins, Jim *Good to Great*
- Hansen, M. T. (2009). *Collaboration: How Leaders Avoid the Traps, Create Unity and Reap B Results*. Boston, MA: Harvard Business Press.
- Huxham, C., & Vangen, S. (2005). *Managing to Collaborate: The theory and Practice of Collaborative Advantage*. New York, NY: Routledge.
- Zwarenstein M, Goldman J, Reeves S. Interprofessional collaboration: effects of practice-based interventions on professional practice and healthcare outcomes. *Cochrane Database of Systematic Reviews* 2009, Issue 3. Art. No.: CD000072. DOI: 10.1002/14651858.CD000072.pub2.

Photo credits

- ▶ CC BY-ND
- ▶ CC BY-NC
- ▶ AZ Quotes
- ▶ Atlassian
- ▶ Marketingdesk.com
- ▶ Quote Bold
- ▶ CC BY-SA-NC
- ▶ CC BY-SA
- ▶ CC BY-NC-ND